

Aden Country Park Children's Play Area Development

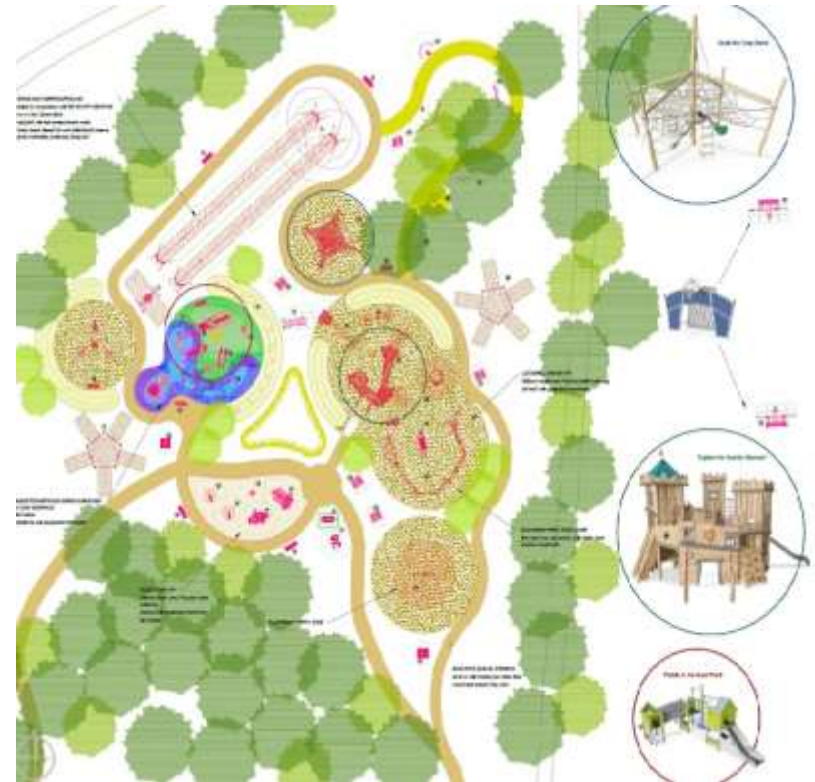
National Lottery Heritage Fund (NLHF)
Parks for People Programme

November 2018 – October 2019

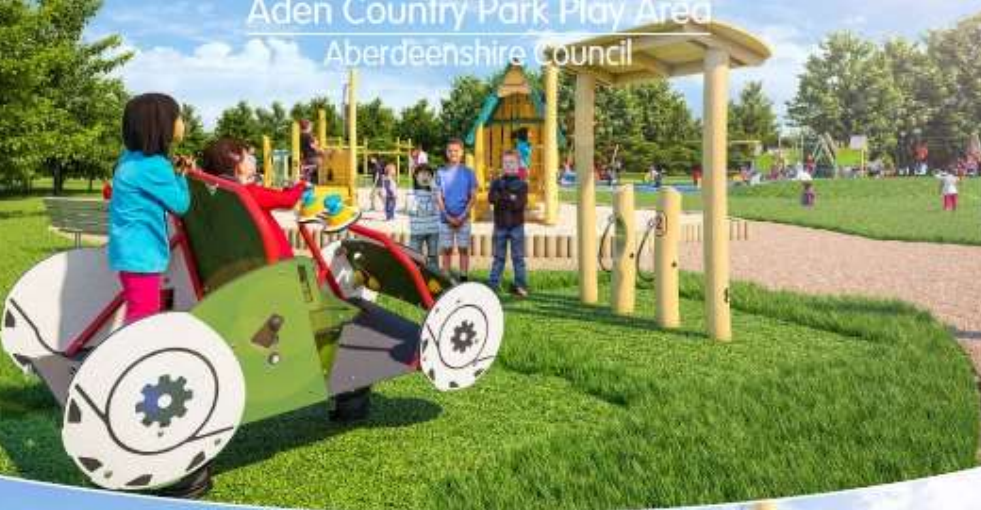


Aden Play Area Design

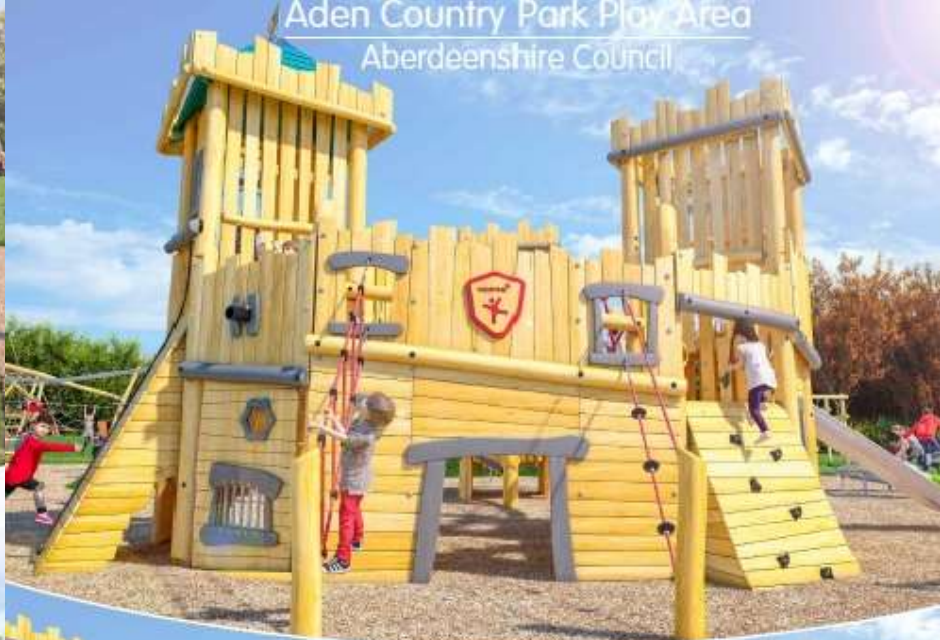
Following a tender process, Kompan were appointed for the design and supply of play equipment and safe surfacing for the creation of a new accessible, multi-generation play facility. Winning design shown.



Aden Country Park Play Area
Aberdeenshire Council



Aden Country Park Play Area
Aberdeenshire Council



Clearance & disposal of old play equipment (Nov 18)





Delivery & Construction of Play Equipment (Dec18 - Jan19)









Groundwork & Installation of Play Equipment (Dec 18 – Feb 19)



















Groundwork & Installation Continues (March - April 19)





































Turf Bed Preparation, Laying and Watering (April - May 19)













Completion of Turf Laying & Installation of Safe Surfacing (June 19)





Soft Opening of Children's Play Facilities (3rd July 19)











Castle Country Mansion Installation (July – Aug 19)









Installation of Accessible Roundabout (Aug 19)





Continuation of Play Park Installation (Sept – Oct 19)

















Official Opening of Children's Play Area (25 Oct 2019)









Many thanks to all our funders and partners for their support:



National Lottery Heritage Fund (NLHF), Scottish Landfill Communities Fund (SLCF) - Viridor Credits, FCC Communities Fund & Easter Hatton Environmental - along with the Friends Of Aden, Macduff Shellfish, Claymore Homes, Macbi Community Hub, Bancon Homes, Café at Aden, Mintlaw Vet Surgery, Colaren Homes, Hamish Watson, David Barron, Mr & Mrs Smith & Aberdeenshire Council